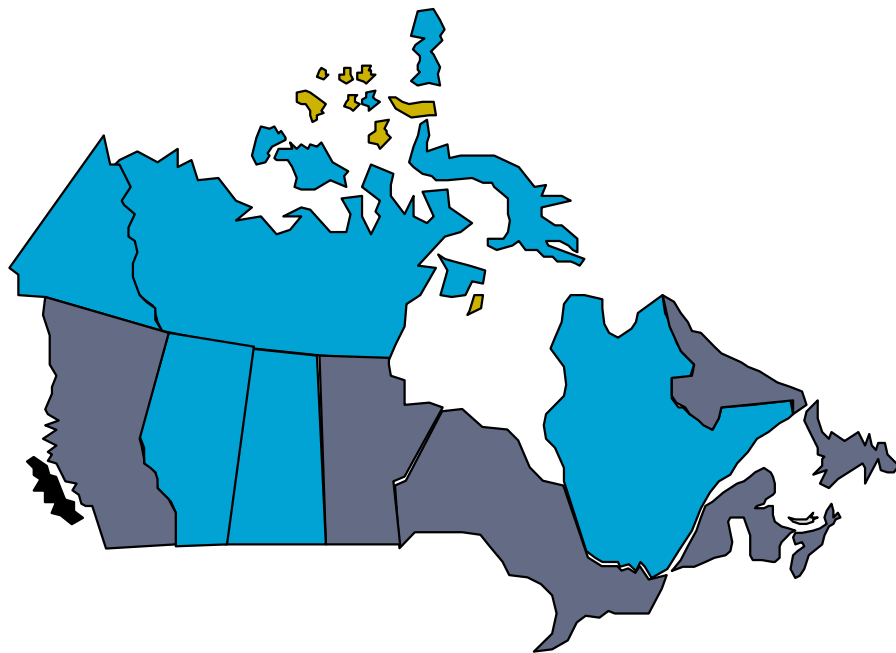


Introduction to workers' compensation for work-related mental health problems



**KATHERINE LIPPEL
CRC EN DROIT DE LA SST
UNIVERSITÉ D'OTTAWA**

Compensation for mental health problems attributable to workplace stress in Canada



All jurisdictions compensate for mental health problems attributable to acute stress

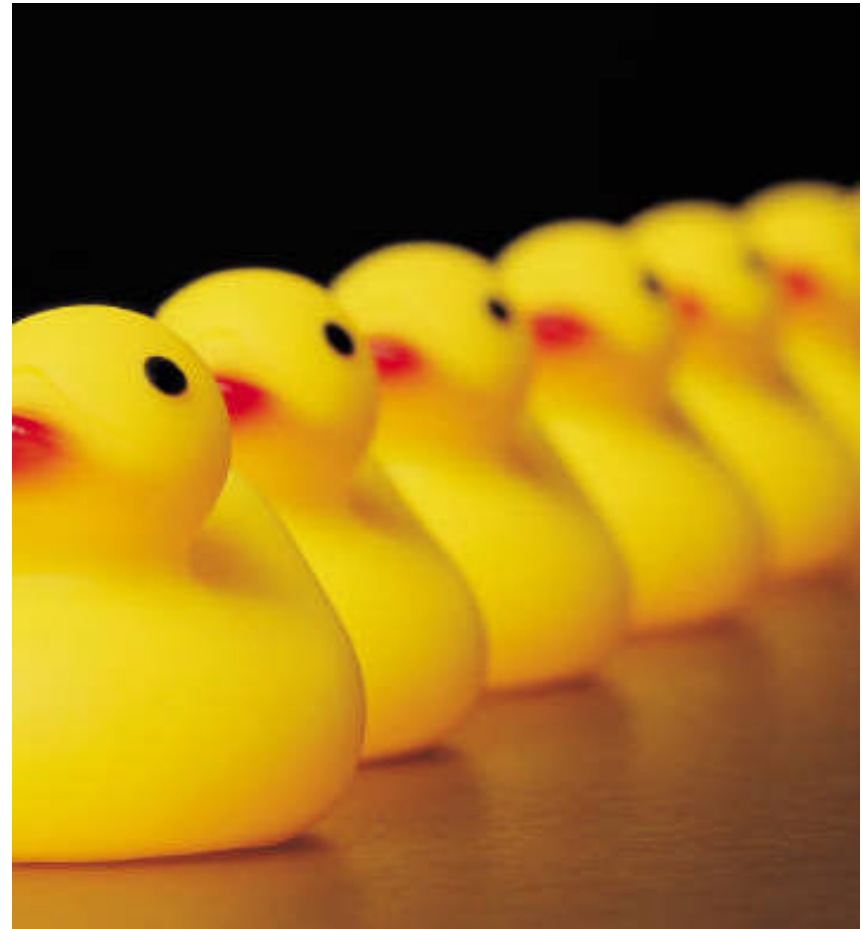
Five jurisdictions compensate for mental health problems attributable to chronic stress

- Yukon
- Nunavut/North West Territories
- Alberta
- Saskatchewan
- Québec

Workers' compensation law: Under what conditions does chronic stress lead to a compensable work accident or occupational disease

Diagnosis of mental health problem (and not just symptoms)

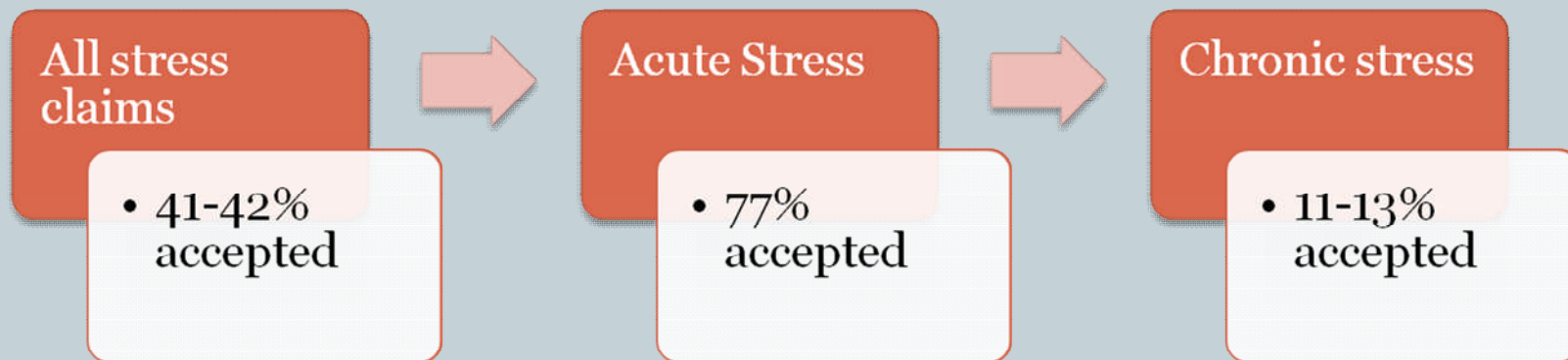
Evidence that stressors, individually or cumulatively, go beyond the «normal» workplace stressors to which workers are exposed in the modern workplace.



Compensation for stress related mental health problems by the CSST, Québec: 2005-2008



Mental health problems represent less than 1% of compensated claims(CSST)



Claims related to workplace violence, CSST 2009



In 2009 the CSST accepted 47,7% of claims for mental health problems and 96% of claims for physical health problems related to workplace violence

So what about salary insurance...

